



## FRP STAIRS TREADS FOR APARTMENT COMPLEXES



## EXPLORE OUR FULL LINE OF FRP SOLUTIONS

DEFI Structural Fiberglass offers a wide variety of structural products made of fiberglass-reinforced polymer including PROForms® shapes, PROGrid® molded grating and PROGrate® pultruded grating. Our team of skilled engineering, design and manufacturing professionals is dedicated to helping customers maximize the benefits of FRP.

### PRODUCTS

- Structural shapes
- Grating
- Decking
- Stairs and handrails
- Ladders and cages
- Fabricated structures

### SERVICES

- Engineering
- Design and drafting
- Fabrication, including CNC machining and assembly
- Secondary coating and painting
- In-house testing

## FABRICATION FORTES

- Platforms
- Ladders
- Handrails
- Catwalks
- Gratings
- Custom Fabrication



STRUCTURAL FIBERGLASS

DEFI STRUCTURAL FIBERGLASS  
PHONE: 800-949-3665 / 281-440-3665 | WEB: WWW.DEFIFIBERGLASS.COM



# FRP STAIRS TREADS FOR APARTMENT COMPLEXES

A stair contractor in Flagstaff, Arizona, asked DEFI to provide stair treads for exterior stairways at multiple apartment complexes. During the winter, this region experiences frequent freeze/thaw cycles, high levels of road salt usage, and heavy snowfall. These conditions make the need for durable, slip-resistant stair treads critical.

## CHALLENGE

Concrete treads are the traditional material for this application. The salt used to melt the snow and ice deteriorates the concrete, resulting in treads that only last a few seasons, are a safety hazard, and require ongoing replacement and maintenance costs.

## SOLUTION

DEFI supplied custom FRP (Fiberglass Reinforced Plastic) stair treads that were designed to outperform traditional materials, especially in these harsh conditions. The project utilized covered FRP stair treads measuring 12 inches deep and 36 inches wide. Each tread features a 2-inch thick molded grating base with a 1/8-inch plate thermally bonded to the surface and finished with a slip-resistant grit. FRP is corrosion-resistant and non-porous, so it can withstand the salt exposure. FRP is also inherently slip-resistant, making it a safer option.

### PRODUCTS TYPICALLY USED:

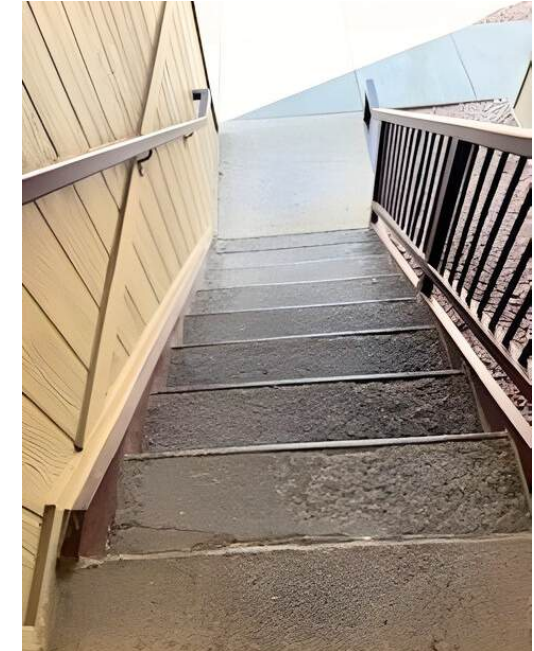


Molded Grating



FRP Plates

## BEFORE: DETERIORATED CONCRETE TREADS



## AFTER: FRP STAIRS TREADS

