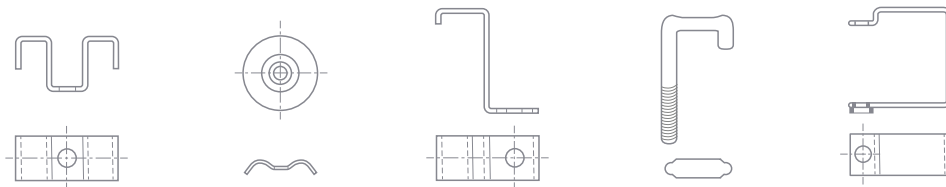


## Fasteners

# FASTEN YOUR GRATING FOR A SECURE FIT

We offer several types of clips to secure our grating products. Normally, the maximum distance between clips should be no more than 4'. All metal clips are made of SS316 stainless steel with a thickness of 0.06". See pages 48-50 to find the clips that fit your application.



# Fasteners for Molded and Pultruded Grating

## M Clip (Saddle Clip)

M clips are used to secure molded or pultruded grating panels to a support using two adjacent grating bars for a secure fit.



MOLDED PULTRUDED

## W Clip (Washer Clip)

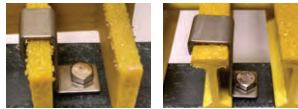
W clips are made specifically for plate or grating with plate on top. The length of the bolt should correspond with the height of the panel.



MOLDED PULTRUDED

## L Clip (J Clip)

L clips are used to fasten molded or pultruded grating to a support bar for moderate loads.



MOLDED PULTRUDED

## Additional Fasteners



## C Clip (End Panel Clip)

C clips are used to join two ends of molded grating together. Clips should be placed every 2'-3' to meet industry requirements.



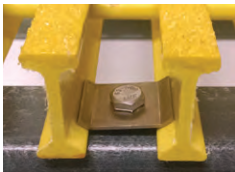
## G Clips

G clips are designed to attach grating to any structural member flange, 0.75" or smaller in thickness, with no drilling required.



## J Bolts

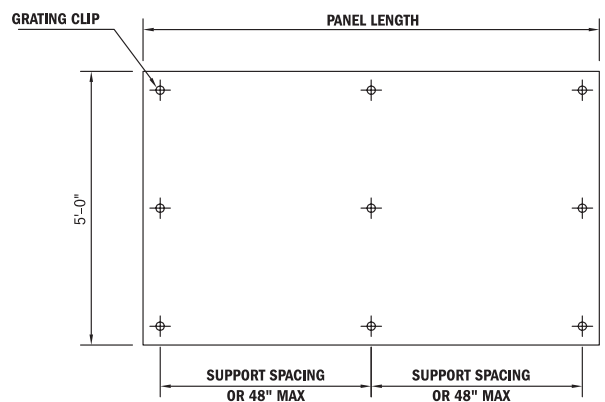
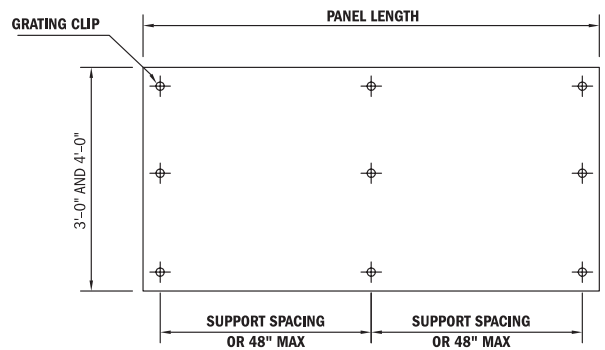
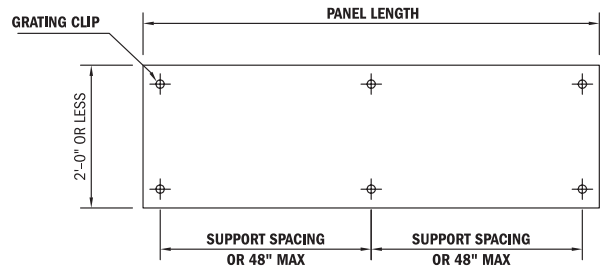
J bolts are used to secure grating to a support bar.



## T Clips

T clips are used to fasten pultruded grating to a support frame.

## Fastener Location Examples



Provide a minimum of 1½" bearing surface per support.

Standard clip spacing is three clips per support per grating panel.

Standard clip spacing for 2'-0" or less in panel width is two clips per support per grating panel.